

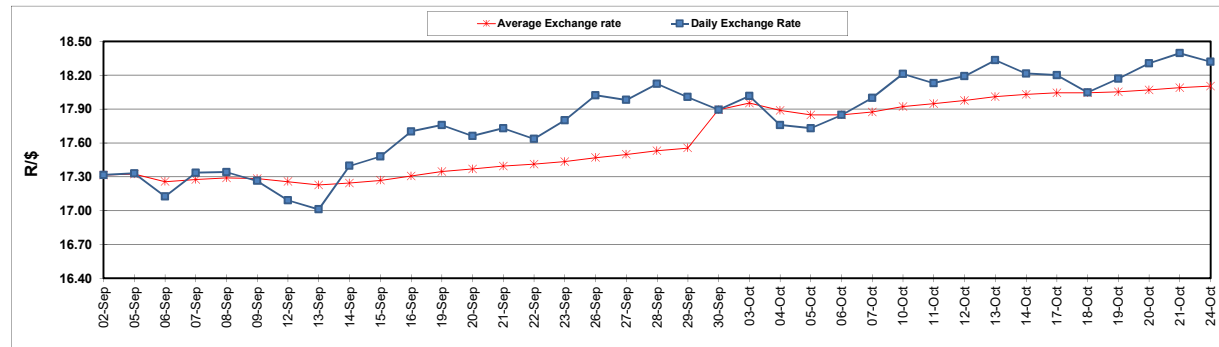
	PETROL 95 ULP	PETROL 93 ULP & LRP	DIESEL 0.05%	DIESEL 0.005%	ILL. PAR.
GAUTENG PUMP PRICE (SA c/l) AS FROM 05/10/2022	2,236.000	2,206.000	-	-	-
WHOLESALE PRICE (SA c/l) AS FROM 05/10/2022	-	-	2,406.100	2,430.500	1,699.288
SINGLE NATIONAL MAXIMUM RETAIL PRICE	-	-	-	-	2,240.000
BASIC FUEL PRICE - 24/10/2022 (SA c/l)	1,251.674	1,214.527	1,667.421	1,688.326	1,548.354
PRESS RELEASE CONTRIBUTION TO BFP 05/10/2022 - 24/10/2022 (SA c/l)	1,145.750	1,115.750	1,523.630	1,548.030	1,481.128
UNIT OVER/(UNDER) RECOVERY - 24/10/2022 (SA c/l)	(105.924)	(98.777)	(143.791)	(140.296)	(67.226)
AVERAGE BASIC FUEL PRICE 30/09/2022 - 24/10/2022	1,219.591	1,193.157	1,680.697	1,706.307	1,568.694
AVERAGE UNIT OVER/(UNDER) RECOVERY 30/09/2022 - 24/10/2022	(55.841)	(61.701)	(158.832)	(160.924)	(76.801)

### ANALYSIS MOVEMENT OF AVERAGE OVER/(UNDER) RECOVERY

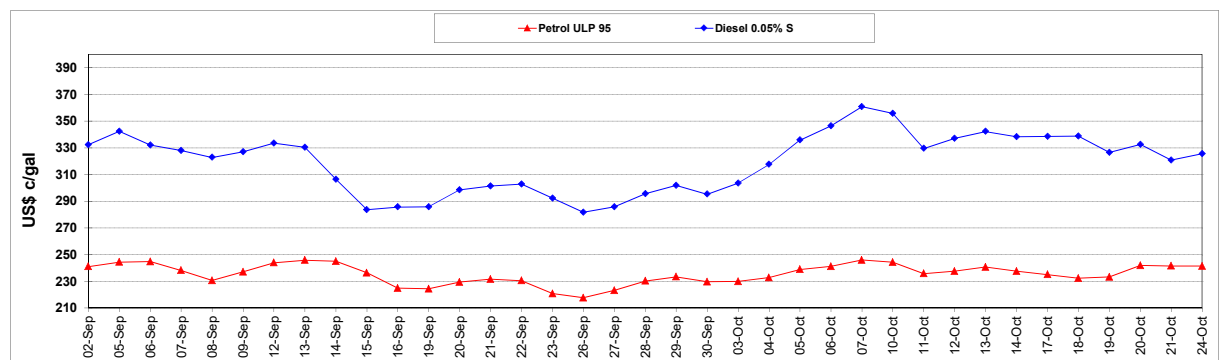
	PETROL 95	PETROL 93	DIESEL 0.05%	DIESEL 0.005%	ILL. PAR.
- MOVEMENT IN INTERNATIONAL PRODUCT PRICES	(49.259)	(55.262)	(149.762)	(151.715)	(68.335)
- MOVEMENT IN EXCHANGE RATE	(6.582)	(6.439)	(9.070)	(9.209)	(8.466)
AVERAGE UNIT OVER/(UNDER) RECOVERY 30/09/2022 - 24/10/2022	(55.841)	(61.701)	(158.832)	(160.924)	(76.801)

### R/\$ EXCHANGE RATE - (R/\$18.3200 - 24/10/2022)

#### EXCHANGE RATE USED IN BASIC FUEL PRICE



#### INTERNATIONAL PRODUCT PRICES OF BASKET USED IN BASIC FUEL PRICE



#### BASIC FUEL PRICE IN SA CENTS PER LITRE

